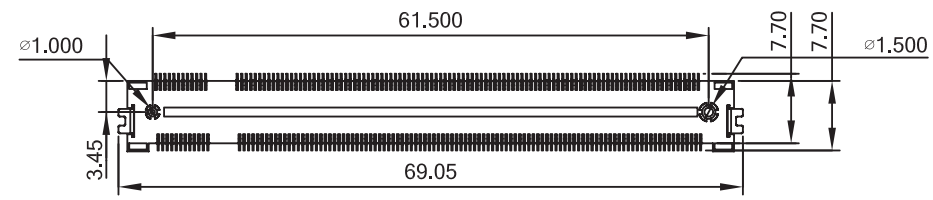


- NOTES:
- SOLDERTAIL TO BE WITHIN 0.05 UPWARD AND 0.2 DOWNWARD FROM Z-DATUM PLACE, AND COPLANALITY OF SOLDERTAILS TO BE WITHIN 0.10 MEASUREMENT POINT IS SOLDERTAILS TIP.
 - RoHS COMPLIANT.



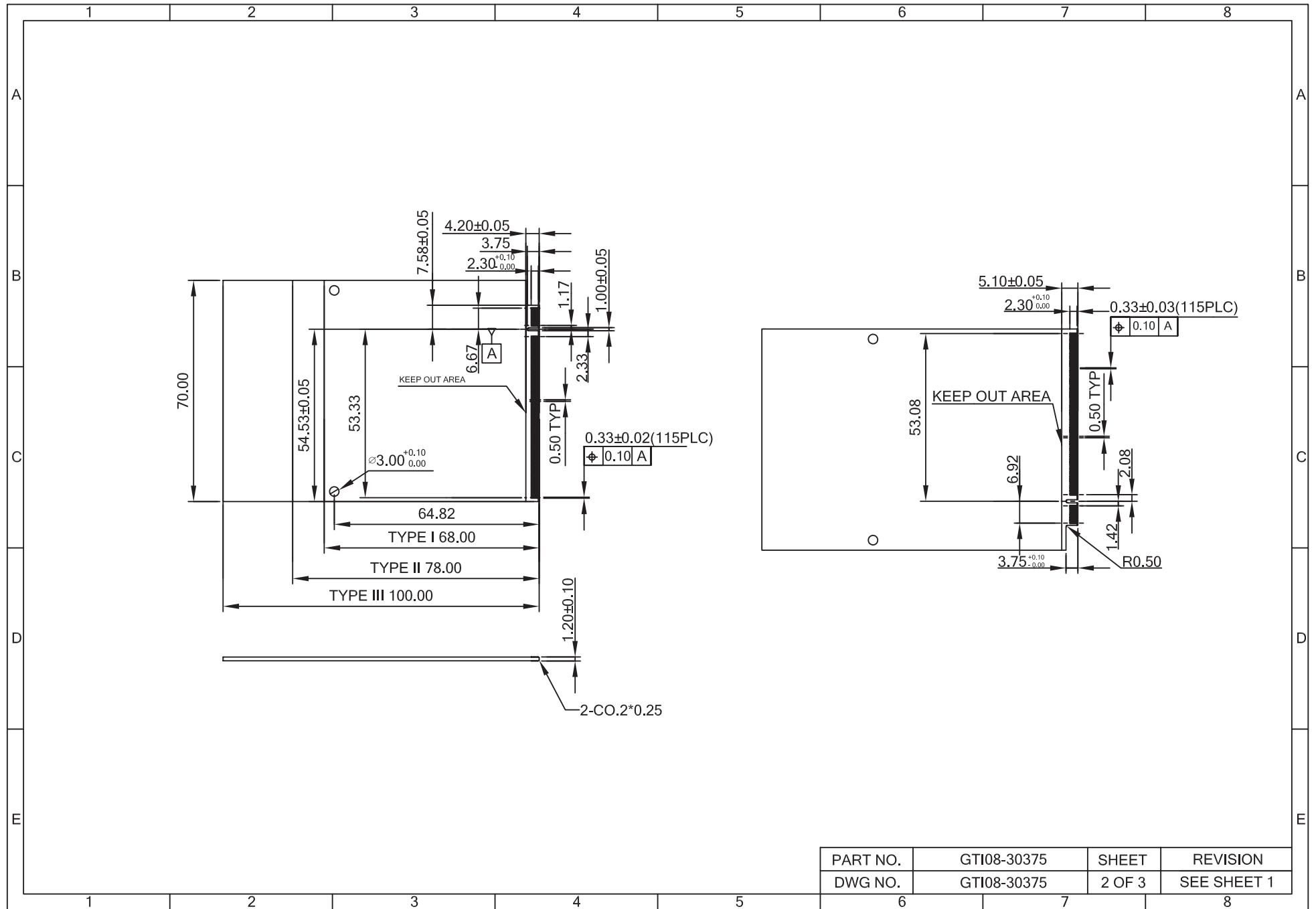
TOLERANCE	
LINEAR	ANGLES
X. ± 0.30	X° ± 2.00°
.X ± 0.20	.X° ± 1.00°
.XX ± 0.10	.XX° ± 0.50°
REV XXX ± 0.05	.XXX° ±

GENESIS TECHNOLOGY, INC.
1015 GRANT STREET S.E. ATLANTA, GA 30315
 a Genesis Electro-Mechanical Company

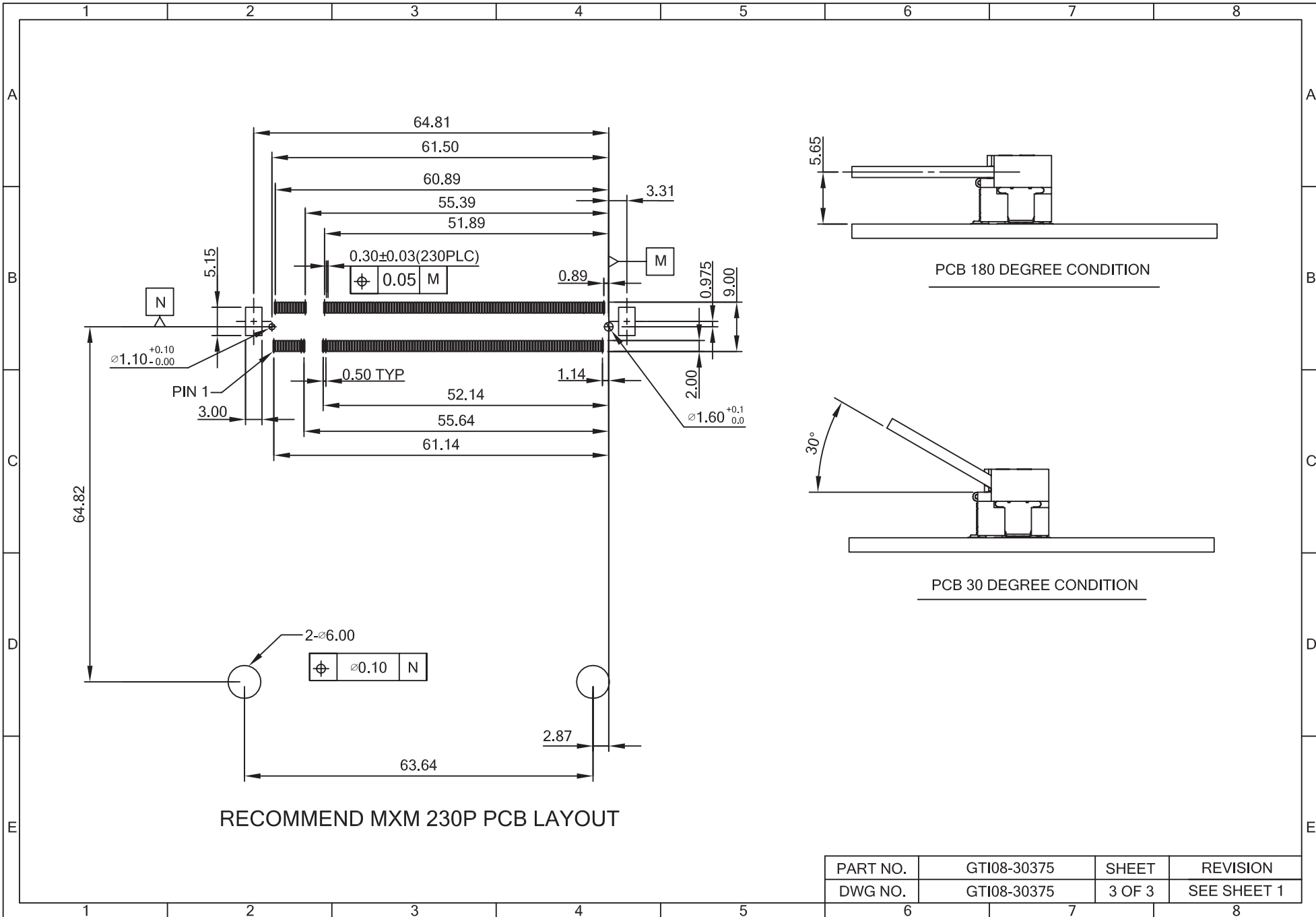
APPD: APPROVED By Axi at 5:27 pm, 11/06/08 MAT'L:
 CHKD: FINISH:
 DRWN: FOX Q'TY:

TITLE: MXM 230P 0.5 PITCH LEFT KEY			
PART NO. GTI08-30375		DWG NO. GTI08-30375	
UNITS MM	SCALE NONE	SHEET 1 OF 3	REV A

[A]	ISSUED	FOX	11/06/08
REV	ECN NO.	NAME	DATE



PART NO.	GT108-30375	SHEET	REVISION
DWG NO.	GT108-30375	2 OF 3	SEE SHEET 1



PART NO.	GT108-30375	SHEET	REVISION
DWG NO.	GT108-30375	3 OF 3	SEE SHEET 1